



RUTGERS UNIVERSITY SCHOOL OF NURSING

JUNIOR YEAR GUIDE

REMOTE EDITION

Blackwood

FROM YOUR PEER MENTOR

TABLE OF CONTENTS



I. ACADEMICS

Study Tips For Remote Learning.....	3
Email Communications.....	4
Video Communications.....	5

II. STUDENT RESOURCES

Self-Care Tips.....	6
Academic Coaching.....	7
Tutoring.....	8
Getting In Contact.....	9
Faculty and Staff Contacts.....	10-11

III. STUDENT ENGAGEMENT

How To Get Involved.....	12
Social Media & Events.....	14
Peer Mentors.....	15-17

STUDY TIPS FOR REMOTE LEARNING

Taking classes remotely can be a challenge to those who are used to or prefer in-person instruction. Here are some tips to make the most of this remote learning experience and aid in your success this semester:

FIND A QUIET, COMFORTABLE SPACE TO WORK

A desk and comfortable, supportive chair are best, but try to work with what you have available to you. Investing in a lumbar pillow or supportive seat cushion might be worth it! If you can't find a completely private space, talk to the people you live with about setting quiet hours so you can attend classes and work in relative silence at certain times of the day.



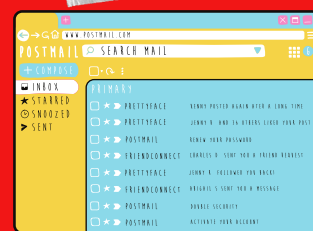
DEVELOP A SCHEDULE OR ROUTINE FOR YOUR DAYS

A consistent routine will help you stay on track and manage your time. Set aside blocks of time in your daily schedule for studying and assignments in addition to classes. Make sure to include time for exercise, meals and free time too. We recommend purchasing a calendar or planner to keep track of class times, assignment due dates and daily/weekly goals. Try not to procrastinate either – leave yourself plenty of time to complete readings and assignments.



MAKE THE MOST OF YOUR CLASSES

Even though they are remote, be sure to login on time and pay attention. Zoom fatigue is real, but stay engaged by taking notes during the lecture, asking questions and participating in class discussions.



KEEP IN CONTACT WITH YOUR PEER MENTORS, ADVISORS & PROFESSORS

Even though you aren't on campus, you're more connected than ever to your campus community. Reach out to your peer mentors, advisors or professors with any questions and concerns. Everyone is invested in your success and would be happy to chat over email, phone or video chat!

FIGURE OUT THE BEST WAY TO STUDY

Some people prefer to study in silence on their own. Others prefer flashcards or studying in a group. Various apps and websites allow you to create digital flashcards to help you study. Don't be afraid to reach out to classmates to create a virtual study group that meets over Webex or Zoom. This will help you get to know your peers, give you a place to ask questions and work together to learn class material.

EMAIL COMMUNICATIONS



Which Email Address Should I Use?

All students have a School of Nursing email address, netid@sn.rutgers.edu. This should be your default email address. **This email address MUST be used for ALL academic work.** You can view your emails for this account at connect.rutgers.edu.

All students also have a generic Rutgers email, also called Scarletmail, (netid@scarletmail.rutgers.edu) that can be viewed at mail.google.com.

If you want to change your Scarletmail to something more simple (e.g. firstname.lastname@rutgers.edu), go to <https://netid.rutgers.edu/index.htm> and click “Manage Email Addresses.” The new email addresses you create will forward emails to your Scarletmail address.

Setting Up Email on Your Phone

Make sure you set up your emails to your phone. For your Scarletmail and generic emails, you can set them up on your phone as you would with any mail. For your nursing email, follow these specific instructions:

[iOS Devices](#)

[Android Devices](#)

DID YOU KNOW?

You can sign up for a discounted Amazon Prime account using your Rutgers email.

Your Scarletmail address has unlimited Google Drive storage and you can use it to get Microsoft Office at getoffice.rutgers.edu.



ACADEMICS

VIDEO COMMUNICATIONS



All SON students have access to both Webex and Zoom for academic use. You can use these accounts to schedule and join meeting with professors, advisors, classmates and student organizations. Meeting members can even share their screen with the group, which improves collaboration.

How To Access Your Accounts

[How to create your Rutgers Zoom Account](#)

[How to create your Rutgers Webex Account](#)

For more information on how to schedule and join meetings check out these links:



[Webex Tutorials](#)

[Zoom Tutorials](#)



SELF CARE TIPS

Adjusting to college isn't easy, especially during a pandemic. Here are some tips to help you stay healthy and well, physically, emotionally and mentally:

EAT HEALTHY AND STAY HYDRATED

To keep feeling good, try to eat well as much as possible. Incorporate fruits and veggies into your day and avoid fried foods or overeating, which will make you feel tired and sluggish. Staying hydrated is also important. Keep a glass of water or water bottle close by while you do your work and attend class so you can sip throughout the day.

EXERCISE, GO FOR A WALK AND STRETCH

Remote classes, studying and assignments means you'll be spending long periods of time sitting down. Try to get up at least once an hour to stretch and walk around your home. Incorporate exercise into your day if you can, and at the very least take a walk outside.

MAKE SURE TO SET TIME FOR YOURSELF

Avoid burn out by taking some time for yourself to talk to family and friends, enjoy a hobby, or even just read a book or watch some TV. This is essential to your mental health, and will make you more productive in the long term. It's okay to prioritize some me-time in your busy schedule!

REMEMBER, HELP IS AVAILABLE IF YOU NEED IT

Rutgers offers its students confidential counseling services to help them deal effectively with school-related stress and personal problems that affect general well-being, home life and/or academic performance. For more info on how to schedule an appointment, [visit this link](#).

ACADEMIC COACHING

The Office of Academic Success (OAS) offers academic coaching and other resources to help you develop skills, strategies, and tools needed to succeed within the rigorous expectations of the School of Nursing curriculum.

What Topics Can OAS Help With?

The Office of Academic Success has developed the Pathways to Success Program to help you navigate your time as a nursing student.

The program includes workshops that cover various topics, including:

- Preparing for Remote Learning
- Creating a Plan
- Organizing Your Study Time
- How to Talk to a Professor
- How to Think Like a Nurse
- Tips for Success from Tutors



To view the workshops, go to the [OAS Canvas page](#)

Requesting an Academic Coaching Appointment

For additional coaching on the topics listed above, or other questions, you can schedule an academic coaching session here.



TUTORING

The Office of Academic Success offers individual and small-group tutoring sessions virtually for many SON classes.

How do I sign up for tutoring?

OAS offers both drop-in hours and appointment-based tutoring for SON classes. You can [check-out the OAS website](#) for up-to-date drop-in hours.

To sign up for a tutoring appointment, fill out the [wufoo form here](#) and select which course you would like assistance with.



Hot Tip from your Peer Mentors

Sign up for tutoring for Patho and Physiology as soon as you can in the summer semester!



GETTING IN CONTACT



Faculty and staff are here to help! Don't be afraid to reach out with any questions or concerns at any time.

School of Nursing Department Contacts

Counseling, Alcohol & Other Drug Assistance Program

(CAPS): For additional information, please call 848-932-7884

Career Services: For more information, please contact careers@echo.rutgers.edu

Office of Academic Success: For additional information, please contact academic.success@sn.rutgers.edu

Student Computing (Student Technology Support): For additional information, please email son_it-admins@sn.rutgers.edu

Student Engagement: For additional information, please contact student.engagement@sn.rutgers.edu



FACULTY & STAFF CONTACT INFORMATION



**MICHAEL
VARANO,**
MBA

***Associate Director,
Student Engagement &
Student Services***

What he can help with:

Academic advising, program questions, student leadership, programming development and logistics

Email:

mv372@sn.rutgers.edu



**JANE
FERRICK**

***Director, Office of
Academic Success***

What she can help with:

Tutoring, academic coaching

Email:

jaf449@sn.rutgers.edu



**STEPHANIE
PFEIFER**

***Academic Support
Specialist, Office of
Academic Success***

What she can help with:

Tutoring, academic coaching

Email:

Sap355@sn.rutgers.edu

**ZONDRA
SMITH**



Administrative Assistant

What she can help with:

Main point of contact for program, assists with scheduling of classes and clinicals

Email:

zds15@sn.rutgers.edu

**ANTHONY
WINSTON,**
PhD(c), MBA



***Manager of Computing
Services and Support,
Information Services and
Technology***

What he can help with:

Technology, computers, technical questions

Email: son_it-

admins@sn.rutgers.edu

FACULTY & STAFF CONTACT INFORMATION



CATHERINE MORSE,
Ed.D., MSN,
CRNA, APNA

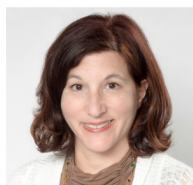
Clinical Assistant Professor & Director, 2 + 2 Traditional Program Division of Entry to Baccalaureate Nursing

What she can help with:

Major academic concerns, questions regarding curriculum and clinical, transitional challenges

Email:

catherine.morse@rutgers.edu



AMY SWEENEY,
Ed.D., MSN,
RN, CNE, CHSE

Lecturer and Clinical Learning Coordinator Division of Entry to Baccalaureate Nursing

What she can help with:

Questions about skills labs and simulations, transitional challenges

Email:

as2296@sn.rutgers.edu



CAROL CAROFIGLIO,
PhD, RN

Clinical Assistant Professor

What she can help with:

Questions about classes and clinical

Email:

cc1314@rutgers.edu

SHREYA PAREKH,
MLER



Career Counseling Officer for the Out-of-Hospital Residency Program

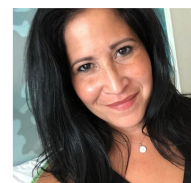
What she can help with:

Out-of-Hospital program questions, externships

Email:

Sparekh@sn.rutgers.edu

VIVIAN MOLINA



Clinical Clearance Coordinator

What she can help with:

Clinical clearance questions

Email:

clinicalclearance@sn.rutgers.edu

HOW TO GET INVOLVED



Volunteering

What hospitals can I volunteer at?

There are multiple hospitals available for volunteering: Copper University Hospital and the Jefferson Hospital in Stratford, Washington Township or Cherry Hill. For more info, click on the links below.

[Cooper University Hospital](#)

[Jefferson Hospitals](#)

HOT TIP:

You may be required to submit a resume and cover letter in order to volunteer. For help developing those, contact Mindy O' Mealia at m.omealia@rutgers.edu in the office of Career Exploration and Success to schedule an appointment.

HOW TO GET INVOLVED

Campus Organizations

In addition to volunteering, there are many campus organizations to get involved in. Check some of them out below:

Rutgers Student Nurses' Association (open to all students)

The Rutgers Student Nurses' Association (RSNA) is the local chapter of New Jersey Nursing Students, Inc. and the National Student Nurses' Association. Their goal is to organize, represent, and mentor students preparing for initial licensure as registered nurses. In addition, members of the organization strive to promote the development of skills needed to be responsible and accountable members of the nursing profession. For more information, [check out their web page here.](#)

Peer Mentor Program (open to rising sophomores, juniors and seniors with 3.0+ GPA)

Our mission is to promote academic and personal success for nursing students at Rutgers School of Nursing by creating an environment of support and scholarship through mentorship. Peer mentors are assigned a group of mentees to work with throughout the year, and work with other peer mentors to help plan programming that helps the freshman class get acclimated to life as a nursing student. For more information, [check out this link.](#)

Blackwood Student Government Council (open to all students)

The Blackwood Student Government Council represents Blackwood students, and is a part of the Student Senate, the official student governance of Rutgers School of Nursing. Our mission is to promote professional and academic success, encourage campus and community involvement, and autonomously advocate for class issues. Students can easily get involved by attending the monthly General Body Meetings and participating in our social and academic events. For more info, email studentsenate@sn.rutgers.edu or reach out to the current Blackwood president [listed here.](#)

Alpha Tau Chapter of Sigma, the International Honor Society of Nursing (open to sophomores with a 3.6+ GPA)

As a chapter of the Sigma Theta Tau International Honor Society, the organization aims to develop nurses into strong leaders as a way to improve global healthcare. Members participate in professional development programming, fundraising initiatives and more. For more information on Alpha Tau, [check out this link.](#)

For more information about all of our student organizations including how to join, [click this link.](#)

SOCIAL MEDIA & EVENTS

Follow the RU SON Student Engagement Office on social media to stay in the loop about upcoming remote programming and events, important program deadlines and more:

Facebook

<https://www.facebook.com/ruengagedson>

Instagram

@ru_engagedson

Events Calendar

To see more about upcoming events and programs, [click here](#) and scroll to the bottom of the page to check out the Student Engagement Office's events calendar.

PEER MENTORS



Siobhan Reheuser

Contact: smr364@sn.rutgers.edu

Class Year: Senior

Major: Nursing

Hobbies/Involvement:

- Gym
- Cooking
- Hiking
- DIYs
- Reading



Charles Davis

Contact: cfd47@sn.rutgers.edu

Class Year: Senior

Major: Nursing

Hobbies/Involvement:

- Rutgers Student Nurses' Association, Rutgers Student Senate
- Working out, Running
- Video games
- Love playing soccer and basketball
- Love Hiking and being outdoors
- Coffee addict



Cing Kim

Contact: cmk271@sn.rutgers.edu

Class Year: Senior

Major: Nursing

Hobbies/Involvement:

- Love watching true crime, listening to music & photography
- Animal lover especially cat & dog



Deanna Denofa

Contact: dd983@sn.rutgers.edu

Class Year: Senior

Major: Nursing

Hobbies/Involvement:

- Avid beach goer
- Camping
- Fishing, kayaking, paddle boarding
- Snowboarding
- Shooting hoops

PEER MENTORS



Gabrielle Kashow

Contact: gek36@sn.rutgers.edu

Class Year: Senior

Major: Nursing

Hobbies/Involvement:

- Rutgers Student Nurses' Association
- Rutgers Blackwood Student Government
- Mom and wife – plus a pitbull mom x3
- I organize a team every year for the Crohn's and Colitis foundation in honor of my son
- Blackwood Peer Mentor Campus Coordinator



Deitra Peek

Contact: dlp186@sn.rutgers.edu

Class Year: Senior

Major: Nursing

Hobbies/Involvement:

- Mom of 2
- Reading, singing and laughing
- Disney!



Lindsey Zahner

Contact: laz57@sn.rutgers.edu

Class Year: Rising Senior

Major: Nursing

Hobbies/Involvement:

- Wife and mom of 2
- Reading
- Binging Netflix



Keerstin Rudderow

Contact: klr169@sn.rutgers.edu

Class Year: Senior

Major: Nursing

Hobbies/Involvement:

- Rutgers Student Nurses' Association
- Spoiling my two kitties
- Time outside; hiking, walking, sight seeing

PEER MENTORS



Amanda Andrew

Contact: ama480@sn.rutgers.edu

Class Year: Senior

Major: Nursing

Hobbies/Involvement:

- Playing with my dofs
- Baking
- Playing guitar
- Knitting
- Yoga
- Swimming



Gianna Genzano

Contact: gg634@sn.rutgers.edu

Class Year: Senior

Major: Nursing

Hobbies/Involvement:

- Binge watching Lost
- Searching for different types of plants to buy online



Grace Kennedy

Contact: Gek35@sn.rutgers.edu

Class Year: Sophomore

Major: Nursing

Hobbies/Involvement:

- Going to the beach
- Spending time with family and friends
- Dancing and singing
- Relaxing and lounging around



Kevin Ditolla

Contact: Kmd350@sn.rutgers.edu

Class Year: Senior

Major: Nursing

Hobbies/Involvement:

- Rutgers Student Nurses Association
- Don't Bully Us Pit Bull Rescue
- Going to the gym
- Being outdoors
- Working with my hands